

INSTALLATION PROCESS

UltraClip™ for use with UltraDeck® Fusion and Rustic Profiles

UltraClip™

Tech Support: 800-518-3569 toll free
Email: info@fastenmaster.com

PNEUMATIC INSTALLATION METHOD

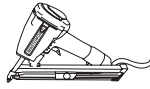
IMPORTANT! Read all instructions carefully and completely to ensure proper installation.

WARNING! Parts have sharp points & edges. Use extreme caution when handling & installing. Wear safety glasses at all times.

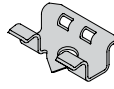
Tools & Materials Needed



Safety Glasses



Masterforce® Metal Connector Nailer
SKU 208-5016 and 208-5019



UltraClip™
SKU #230-8112, 8113, 8114



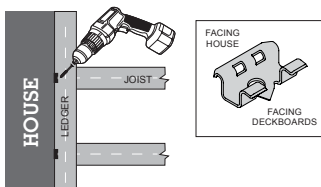
Adapter
SKU #230-8115



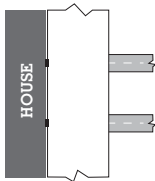
Pneumatic 1½" scrawl
SKU #208-2005

Step 1

INSTALL FIRST BOARD



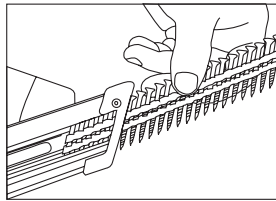
Decks running parallel with the house should start with the clip against the structure, as shown above.



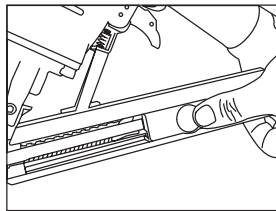
Slide first board into exposed clip tabs and continue installation process.

Step 2

INSERT PNEUMATIC SCREWS



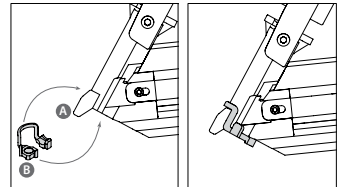
Insert a sleeve of collated pneumatic screws into the rear of the magazine.



Pull back the spring coil until it locks onto the back of the sleeve.

Step 3

INSTALL THE CLIP ADAPTER

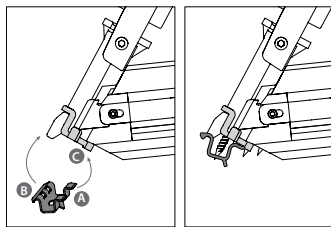


A Centering prongs on the nose of the nailer
B Adapter

- 1 Install the adapter (B) by sliding it over the centering prongs (A) on the nose of the nailer.
- 2 The magnet should seat flush against the bottom right horizontal surface of the nailer.
- 3 Ensure the bottom locating tab is seated in the groove of the fastener rail.
- 4 The left side of the adapter (B) must seat around the bottom outer edges of the nose of the nailer (A).

Step 4

POSITIONING CLIPS AND FASTENERS



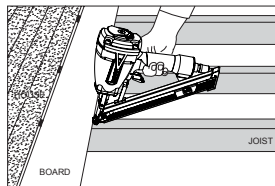
A Bottom legs of the clip
B Top of the clip
C Adapter

- 1 Align bottom legs of the clip (A) with magnet so that they rest on the bottom tabs of the adapter (C).
- 2 Roll the top of the clip (B) up and onto the centering tabs of the nose piece ensuring that the tip of the fastener penetrates the hole in the clip.

* Note: The length of the clip should be parallel to the board. Rear legs should be horizontal with deck joists.

Step 5

INSTALLING CLIPS AND FASTENERS

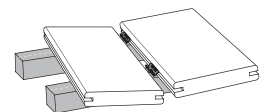


- 1 Push clip fully into groove so that the centering prongs on the nailer touch the side of the decking board. Ensure that the nailer handle is horizontal to the decking joist.
- 2 Press down on the nailer to disengage the safety and pull the trigger to install the screw.

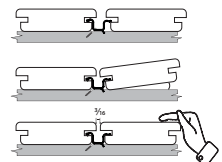


Step 6

COMPLETE INSTALLATION OF BOARDS



- 1 To place next deck board into position, slightly raise outer edge of board and slide under the rear tabs of the clip until board contacts the base of the clip.



- 2 Check gap between boards for consistency. Apply force to ensure board is fully installed.

Repeat steps 4 thru 6 until deck is complete.

INSTALLATION PROCESS

UltraClip™ for use with UltraDeck® Fusion and Rustic Profiles

UltraClip™

Tech Support: 800-518-3569 toll free
Email: info@fastenmaster.com

HAND DRIVEN INSTALLATION METHOD

IMPORTANT! Read all instructions carefully and completely to ensure proper installation.

WARNING! Parts have sharp points & edges. Use extreme caution when handling & installing. Wear safety glasses at all times.

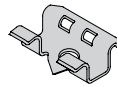
Tools & Materials Needed



Safety Glasses



Cordless Drill



UltraClip™
SKU #230-8112,
8113, 8114



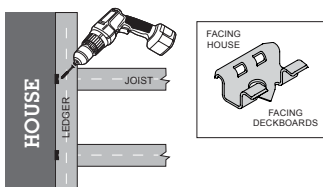
#2 Square
Driver Bit



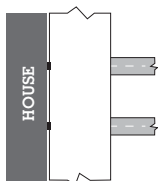
Recommended fasteners:
#6 x 1 1/4" exterior coated
screws, SKU# 230-8104

Step
1

INSTALL FIRST BOARD



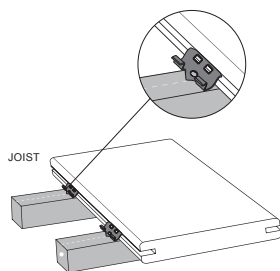
Decks running parallel with the house should start with the clip against the structure, as shown above.



Slide first board into exposed clip tabs and continue installation process.

Step
2

POSITION ULTRACLIP™ FASTENERS



Fully insert UltraClip™ into grooved edge of deck board. Screw hole should line up with the center of support joist.

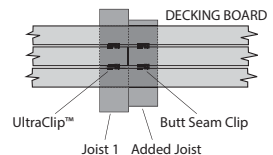
Note: Side of clip with two individual legs will face you when installing



HELPFUL TIPS

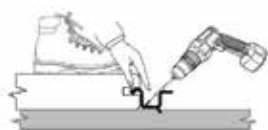
How to do a butt seam

First, install a small framing board 10-12" alongside the joist on which the seam is going to land. Install additional fastener into previous board above small framing block. Line up your first board in the center of the joist and the small framing board. Install fasteners and screw at each joist of the first board including the joist at the seam. Then install your second board in the same fashion, and place a second fastener at the seam attaching it to the small framing block. Be sure you follow the end-to-end gapping instructions provided by decking manufacturer.



Step
3

INSTALLING CLIPS AND FASTENERS

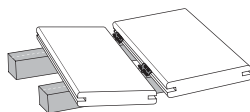


While standing on deck board, install recommended screw at 45° angle through the hole in the clip and into joist, while applying pressure on clips. Install one fastener and screw at each support joist.

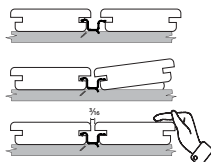
Make sure clip's body is vertical to deck board and the screw is holding fastener down tight to support joist. Adjust torque setting on screw nailer to prevent spin out of the screw head.

Step
4

COMPLETE INSTALLATION OF BOARDS



1 To place next deck board into position, slightly raise outer edge of board and slide under the rear tabs of the clip until board contacts the base of the clip.



2 Check gap between boards for consistency. Apply force to ensure board is fully installed.

Repeat steps 2 thru 4 until deck is complete.

How do you attach the last board?

To finish, we recommend pre-drilling the last deck board in the outer lip and fasten to the rim joist every 8" with 1 5/8" triple coated deck screws. No UltraClip™ is used on the outside of the last board.

How to replace a board

- Make two parallel cuts down the center of the board to be replaced, and remove the center piece.
- Using a small pry bar, remove the remaining pieces of decking from the tabs.
- Using a reciprocating saw, remove the tabs on the side of the board with the screw heads showing.
- Position new board into place, and carefully slide onto remaining tabs.
- Once board is set into position, secure the lead edge with 1 5/8" triple coated deck screws.